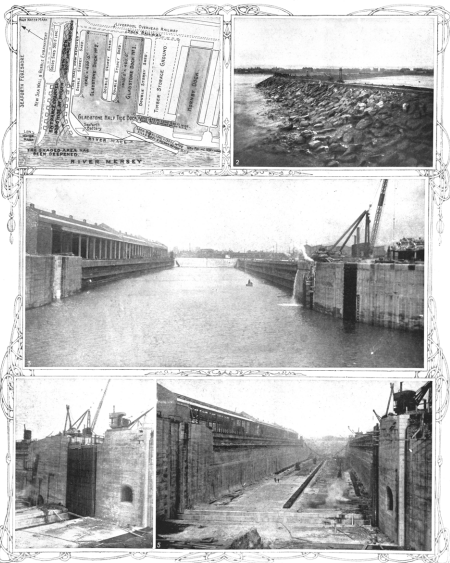


FIGURING IN THE LIVERPOOL PROGRAMME: THE NEW GLADSTONE DOCK.

PUBLISHED BY KEMMIS.



1. PROGRAMMED TO BE OWNED BY THE KING ON JULY 2: THE NEW GLADSTONE DOCK, LIVERPOOL, AND OTHER EXTENSIONS—A PLAN.

2. PROSPECTED LAST MONTH, AFTER THE WORKING END OF THE PRODUCTION A GENERAL VIEW OF THE CANAL CHANNEL, 1890, WHICH THE SLIDING GATE CHANNEL IS WITHDRAWN.

According to programme, the King was to visit Liverpool in steam on Friday, July 12; to the Exhibition, inspect vessels, attend a civic reception at the Town Hall, inspect the greatest fleet of mercantile shipping ever gathered together in the Mersey (160 vessels in all), inspect the Cunarder "Mauretania," and open the new Gladstone Dock. With regard to certain of our illustrations, it may be said of No. 2 that the material for the bank was obtained from excavations for basins docks on adjacent land. The north side of the bank, upon which, in the photograph, are two muggers

3. THE DISMEMBERMENT OF THE NEW GLADSTONE DOCK: A GENERAL VIEW OF THE BANK ENVELOPING THE SIDE OF THE WORKS AS IT WAS IN JANUARY 1913. ENHANCEMENT HAD BEEN BROKEN DOWN AND THE WALLS HAD BEEN ADMITTED: THE GLADSTONE DOCK.

4. SHOWING ON THE RIGHT, THE GATE FOR THE WATER FROM THE PERPETUOUS CHANNEL: A GENERAL VIEW OF THE DOCK FROM THE WEST END TAKEN FROM THE TOWER MOUNTED ASIA.

and workmen, forms part of the permanent work. The west end of the bank, in the foreground, is just outside the dock entrance and will be covered with the walls, floor, and so on, have been completed. Of Plans Nos. 4 it should be said that the sliding gate is 132 feet long, 58 feet deep, and 15 feet wide, and called for the use of 2200 tons of steel girders. It will be hoisted over the dock entrance by electric cranes when the dock is required as a dry dock, and the lift-600 will collect of water which the dock holds and then be pumped out.